



Nothing else measures up!

Follow us!



Prospect House
George Cayley Drive
Clifton Moor
York
England
YO30 4XE

Tel: +44 (0) 1904 692723
Fax: +44 (0) 1904 690385

E-Mail: sales@yorksurvey.co.uk



Perma-Mark Survey Station



Code: 10035-10060-10100

Operating Instructions



Heavy Duty Spikes

Perma-Marks are manufactured from high tensile 18mm ribbed steel for maximum ground grip and rigidity.

Three sizes available, 350mm for hard ground, 600mm for medium ground & 1 metre for soft ground conditions.

Reversible Top

Perma-Marks come complete with a unique reversible aluminium head. The advantages of the reversible head are important, giving you the ability to set the head in pyramid form above ground, increasing visibility, or flush with the ground surface, giving better stability and resistance to vandalism. The reverse flush fitting makes the unit easy to conceal in pedestrian areas and on lawns, where grass cutters need to run over the top.

Anchored Spike

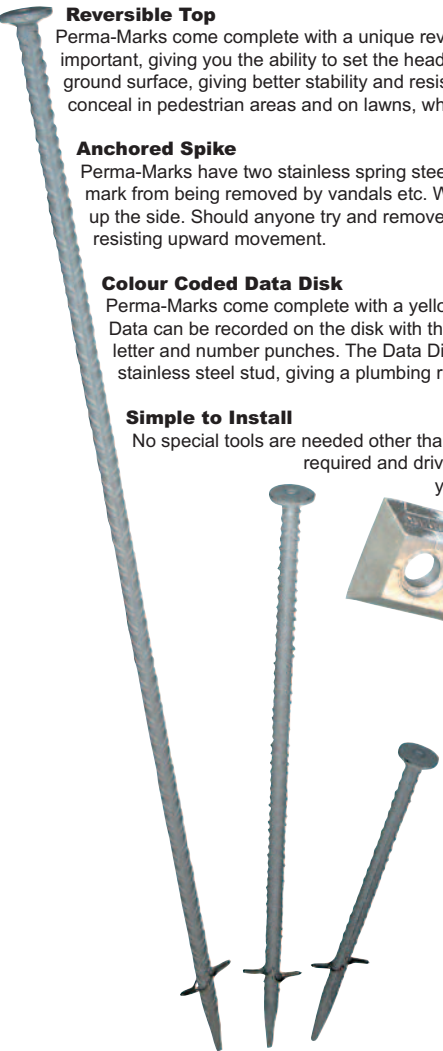
Perma-Marks have two stainless spring steel retention lugs at the base, to help prevent the all-important reference mark from being removed by vandals etc. When the spike is driven into the ground the retention lugs fold neatly up the side. Should anyone try and remove the marker, the retention lugs are forced open with the soil, thus resisting upward movement.

Colour Coded Data Disk

Perma-Marks come complete with a yellow data-disk allowing you to record the station reference numbers etc. Data can be recorded on the disk with the Tough-Mark site pen supplied or they can be indented with steel letter and number punches. The Data Disk is secured to the top of the Perma-Mark with a dome headed stainless steel stud, giving a plumbing reference point and high point for staff readings.

Simple to Install

No special tools are needed other than a lump hammer: simply place the Perma-Mark head in the position required and drive the spike through the hole into the ground. Mark the data-disk with your details and secure to the top with the plumbing stud.



Other Permanent Ground Markers

York Survey Supply Centre manufactures a full range of Ground, Wall and Floor Markers, suitable for a variety of conditions and marking requirements. Please call for details.



5/8" Accessory Adaptor (10250)



No Special Installation Tools Needed

Perma-Marks are simple to install: place the head in the position required and drive the spike through the head. Mark the data-disk with your details and secure with the plumbing stud.



Perma-Mark.... The Complete Outfit

Every Perma-Mark comes complete with:
Anchored spike - Reversible aluminium head -
Yellow data-disk and stainless steel plumbing / levelling stud.

Your consignment will also include an Allen key for securing the data-disk as well as a Tough-Mark pen for recording data.

