



Nothing else measures up!

Follow us!



Prospect House
George Cayley Drive
Clifton Moor
York
England
YO30 4XE

Tel: +44 (0) 1904 692723
Fax: +44 (0) 1904 690385

E-Mail: sales@yorksurvey.co.uk



Araldite Rapid (Syringe Pack)



Code: 203270

Operating Instructions



5
min

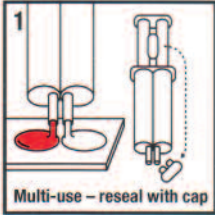
Rapid
All materials
Long lasting
Fast setting

Strong, long lasting solvent-free adhesive which is water resistant and can be painted or sanded.

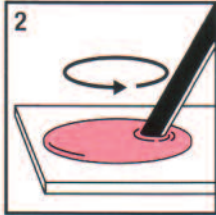
For multi-use.

Working time	5 min	Handling time	20 min	Full strength	2 h
--------------	--------------	---------------	---------------	---------------	------------

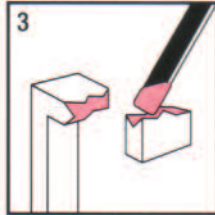
How to use



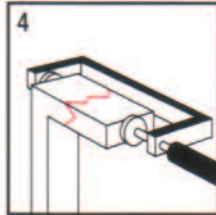
Snap off the resealable cap from between the syringe plungers and break off the end seal. Depress the plunger to dispense equal amounts of both components onto a clean disposable surface. Re-fit the cap to close the nozzle for multi-use purpose.



Mix thoroughly for at least 30 seconds until well mixed. Araldite® Rapid remains usable for max. 5 minutes.



Make sure both surfaces are clean and dry. Apply to both surfaces of the joint.



Assemble carefully and remove any excess adhesive with a sharp blade once partially set.



Application

Bonds metal, wood, masonry, ceramics, glass, dry concrete, chipboard, leather, cardboard, fabric, rubber and most plastics (except polyethylene, polypropylene, Teflon®).

Make sure surfaces are clean and free from dust, corrosion, dirt and grease. For optimum bonding, slightly roughen surfaces with sandpaper and degrease metals with a suitable solvent.

During assembly apply light pressure to the joint until set (clamps, tape) around 20 minutes*. Allow 2 hours to attain full strength before rough handling or sanding.



Characteristics and advices

Araldite® Rapid is a strong 2-component epoxy with fast setting. Parts repositionable for 4 minutes. High temperature resistance (-30°C to 80°C). Oil, chemical and impact resistant.

Do not use to repair or bond items that will contact food or drink. Not recommended for bonding rear-view mirrors to car windscreens.

Should be stored in a dry place at room temperature in the original syringe.



Warning: Causes serious eye irritation. Causes skin irritation. May cause an allergic skin reaction. Toxic to aquatic life with long lasting effects. Wear protective gloves/eye protection/face protection. Avoid release to the environment.

If in eyes: Rinse cautiously with water for several minutes. Remove contact lenses, if present and easy to do. Continue rinsing.

If on skin: Wash with plenty of soap and water. Read label before use. Keep away from children. If medical advice is needed, have product container or label at hand.

Contains: Bisphenol-A-Epichlorhydrin Epoxy resin (MW < 700). / butanedioldiglycidyl ether. / 2,4,6-tris(dimethylaminomethyl)phenol. / N,N,4-trimethylpiperazine-1-ethylamine.