



Nothing else measures up!

Follow us!



Prospect House
George Cayley Drive
Clifton Moor
York
England
YO30 4XE

Tel: +44 (0) 1904 692723
Fax: +44 (0) 1904 690385

E-Mail: sales@yorksurvey.co.uk



Entry Level Borescope



Code: 28228

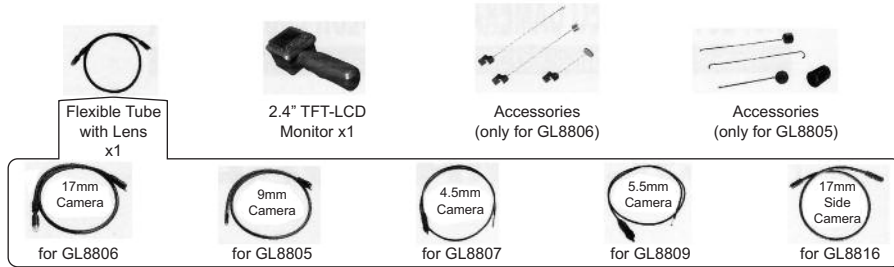
Operating Instructions

Entry Level Borescope

Welcome

Congratulations on your purchase of our inspection video camera with colour LCD monitor, the Explorer Compact. Please read the user manual carefully before using this product. This product is designed as a remote inspection device, appropriate for use in surveying pipes or other hard to reach places, equipment or furnishing installation, car repair, etc. Features include waterproof LED lens, real-time viewing.

Packing List



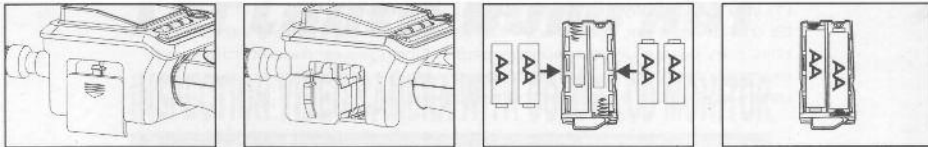
Structure



Installation

To Install Batteries

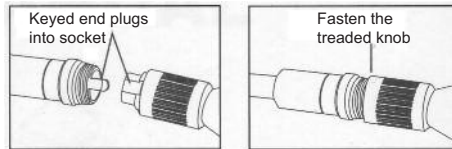
1. Remove the cover and liberate the battery compartment from its casing.
2. Insert 4x AA batteries into their appropriate slots, with proper orientation, as indicated on the battery compartment;



3. Reinstall battery compartment and replace battery cover.
- NOTE:** Dry your hands before installation or replacing batteries.

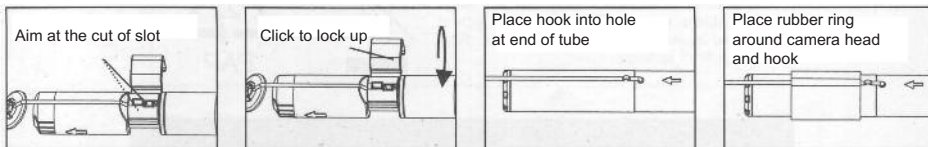
To Attach Flexible Tube with Monitor

To connect the flexible tube camera with monitor, first make sure that the keyed end of the tube is aligned with the slot in the handle, then use slight force to push them together. Once properly aligned, twist the treaded knob clockwise until the connection is securely in place.



To Install Accessory

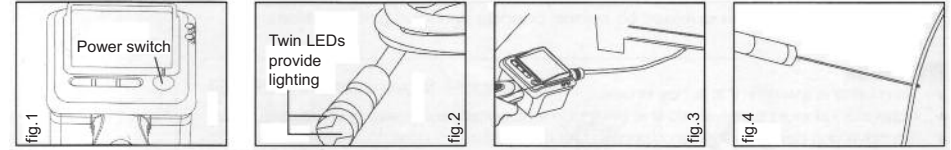
The three included accessories (mirror, hook and magnet) are all attached to the tube in the same way as illustrated below:



For GL8806: to prepare accessory for installation, push down on stem-side of black interface while pulling away from adjacent side. This will open the base of the accessory. Next, align inside of stem-side to either treaded surface at the base of camera head. Tighten to secure the accessory in place.

Operation

1. Press the power switch to turn the camera on (refer to fig. 1). The power indicator will illuminate and the LCD will become viewable.
2. If the image on the LCD is unclear, please adjust brightness, contrast and mirror by toggling the buttons on the monitor face.
- * LEDs Brightness Control: The 6 levels of LED brightness can be adjusted by pressing the LEDs Brightness Control button (refer to fig. 2).
- * LCD Contrast Control: The 8 levels of LCD contrast may be adjusted by pressing the LCD Contrast Control button.
3. To rotate the orientation of the image displayed on the LCD by 90°, press the Mirror button. There are four possible image orientations that you can toggle through by pressing this button.
4. When in use, the tube should easily manoeuvre itself into position. Do not apply excessive force (refer to fig. 3)
5. The accessories included with Explorer Compact can be used to retrieve small items like dropped rings or screws (refer to fig. 4).



TIP: The flexible tube can be bent into numerous shapes that may help you explore areas you otherwise thought were impossible to see.

NOTE: Do not immerse the monitor in water. Store in a dry place. Such measures reduce the risk of electric shock and damage. Only the lens and tube are water-resistant when the unit is fully assembled.

Specifications

Model No.	GL8805	GL8806	GL8807	GL8809	GL8816
Imaging Sensor	CMOS				
Total Pixels	640 x 480 (PAL) 640 x 480 (NTSC)	704 x 576 (PAL) 712 x 486 (NTSC)	320 x 240	720 x 625 (PAL) 720 x 525 (NTSC)	640 x 480
Horizontal Viewing Angle	36°	50°	63°	48°	35°
Minimum Illumination	0 Lux				
Night Vision Range	0.5m	1m	2cm	5cm	6cm
Power Supply	4x AA batteries				
Tube Diameter	9mm	17mm	4.5mm	5.5mm	17mm
Waterproof Capacity	IP67 (for lens/tube only)				
LCD Screen Type	2.36" TFT-LCD				
Effective Pixels	480 x 234				
Video System	PAL / NTSC				
Consumption Current (Max.)	150mA				
Dimensions (W x D x H)	201 x 83 x 59mm				
Approx. Weight	385g	460g	214g	286g	458g
Operating Temperature	-10°C - 50°C / 14°F - 122°F				
Operating Humidity (Max.)	15 - 85%RH				

*All specifications are subject to minor change without prior notice.

Warnings

- Turn off the system if it is not in use.
- Attention should be given to the environment aspects of battery disposal.
- Remove the batteries when cleaning the unit.
- Remove the batteries before storing the unit for a long time.
- When necessary, REPLACE ALL FOUR BATTERIES in this unit with new ones, not one or two batteries at a time.
- Use only the size and type of battery specified.
- Be sure to install the battery with the correct polarity as indicated in the battery compartment.
- Properly dispose of the battery. Exposure to high temperatures can cause the battery to explode, so do not dispose of in a fire. Place tape over the terminals to prevent direct contact with other objects. Some countries have regulations concerning battery disposal. Please follow all applicable regulations.

FCC Information

This device complies with part 15 of the FCC Rules. Operation is subject to the following two conditions:

1. This device may not cause harmful interference.
2. This device must accept any interference received, including interference that may cause undesired operation. Changes or modifications not expressly approved by the party responsible for compliance could void the user's authority to operate the equipment.

