

2. Press the ▲ or ▼ button to select 'Frame Rate' and then press the 'OK' button.
3. Press the ▲ or ▼ button to toggle between different frame rates. Once you have highlighted your desired selection, press the 'OK' button to confirm and exit.

#### Time Stamp Setting

1. In the setting mode, press the ▲ or ▼ button to select 'RECORDER SETTING' and then press 'OK' button.
2. Press the ▲ or ▼ button to select 'Time Stamp' and then press the 'OK' button.
3. Press the ▲ or ▼ button to toggle between on and off. Once your desired selection is made, press the 'OK' button to confirm and exit.


#### Recording Type

1. In the setting mode, press the ▲ or ▼ button to select 'RECORDER SETTING' and then press 'OK' button.
2. Press the ▲ or ▼ button to select 'Recording Type' and then press the 'OK' button.
3. Press the ▲ or ▼ button to toggle between 'still' and 'video'. Once your desired selection is made, press the 'OK' button to confirm and exit.

#### Event Playback

1. In the setting mode, press the ▲ or ▼ button to select 'EVENT PLAYBACK' and then press 'OK' button.
2. Refer to the user manual instructions on Playback of Video/Picture, Deleting Video/Picture and Deleting Folder for guidance.

#### TROUBLESHOOTING

Problem	Possible Cause	Likely Solutions
Tool will not start	1. Monitor not charged 2. Batteries need charging	1. Charge monitor 2. Replace batteries in control handle
Monitor will not charge	1. Adaptor cable not attached properly 2. Adaptor not connected to power	1. Make sure adaptor cable is connected between monitor and adaptor 2. Make sure adaptor is securely plugged into wall socket
Image too dark or light	1. LEDs near camera need adjustment 2. Monitor display needs adjustment	1. Use dial on control handle to adjust brightness of LEDs 2. Use contrast and brightness buttons on monitor to adjust image
 Follow all safety precautions whenever diagnosing or servicing the tool. Disconnect power supply before service.		

#### SPECIFICATIONS

Imaging Sensor	CMOS
Total Pixels	640 x 480 (PAL) 640 x 480 (NTSC)
Horizontal Viewing Angle	36°
Transmission Frequency	2468MHz
Minimum Illumination	0 Lux
Modulation Type	FM
Bandwidth	18MHz
Power Supply	4x AA batteries
Unobstructed Effective Range	10m (max)
Waterproof Capacity	IP67 (for lens/tube only)
Tube Diameter	9mm
Dimensions (WxDxH)	186 x 145 x 41mm (excluding flexible tube)
Approx. Weight	408g
LCD Screen Type	3.5" TFT-LCD
Effective Pixels	960 x 240
Video System	PAL/NTSC
Transmission Frequency	2414MHz, 2432MHz, 2450MHz, 2468MHz
Exterior Supply Voltage	5VDC
Consumption Current (Max.)	500mA
Charging Time	3 hours
Working Time	2 hours
Picture/Video Pixels	640 x 480
Video Size	20M byte/minute
Frame Rate	30 frame/second
Video Output Level	0.9-1.3VP-P@75ohm
Receiving Sensitivity	<-85dBm
Dimensions (WxDxH)	100 x 70 x 25mm
Approx. Weight	140g
Operating Temperature	-10°C to +40°C / +14°F to +104°F
Operating Humidity (Max.)	15 to 85%RH

Actual transmission range of wireless monitoring may vary according to the weather, location, interference or building construction.  
All specifications are subject to minor change without notice.

#### FCC INFORMATION

This device complies with part 15 of the FCC Rules. Operation is subject to the following two conditions:

- (1) This device may not cause harmful interference.
- (2) This device must accept any interference received, including interference that may cause undesired operation. Changes or modifications not expressly approved by the party responsible for compliance could void the user's authority to operate the equipment.

The graphics included in this user manual are subject to minor change without notice.

# YORK Survey Supply

## Explorer Premium Video Borescope



#### Follow us!

 York Survey Supply Centre  
 @York\_Survey  
 @York\_Survey

Prospect House, George Cayley Drive, Clifton Moor, York, England YO30 4XE

Tel: +44 (0) 1904 692723 Fax: +44 (0) 1904 690385  
 E-Mail: sales@yorksurvey.co.uk www.yorksurvey.co.uk

## Operating Instructions

# Explorer Premium Video Borescope

## GENERAL SAFETY INFORMATION

WARNING! Read and understand all instructions. Failure to follow all instructions listed below may result in electric shock, fire and/or serious personal injury.

## SAVE THESE INSTRUCTIONS!

- Prevent object and liquid entry. Never spill liquid of any kind on the video display unit. Liquid increases the risk of electrical shock and damage to the product.
- The unit is not shock-resistant. Do not use as a hammer and avoid high impact resultant from things such as dropping the unit from height.
- Do not immerse camera handle or monitor in water. Avoid moisture and store product in a dry place. Such measures reduce the risk of electric shock and damage. **The lens and the tube are water resistant when the unit is fully assembled, but the monitor and handle are not.**
- Do not use the camera if condensation forms inside the lens. Let the water evaporate before using again.
- Turn off the system if it is not in use.
- This product can only be completely disconnected from its power source by unplugging the power adaptor.
- Do not cut the DC power cable provided with this product to fit with another power source.
- Attention should be given to the environmental aspects of battery disposal.
- Remove the batteries when cleaning the unit.
- Remove the batteries before storing the unit for a long time.
- When necessary, REPLACE ALL FOUR (4) BATTERIES in the unit with new ones, not one (1) or two (2) batteries at a time.
- Use only the size and type of battery specified.
- Be sure to install the battery with the correct polarity as indicated in the battery compartment.
- Properly dispose of batteries. Exposure to high temperatures can cause batteries to explode so do not dispose of in a fire. Place tape over the terminals to prevent direct contact with other objects.
- Some countries have regulations concerning battery disposal. Please follow all applicable regulations.

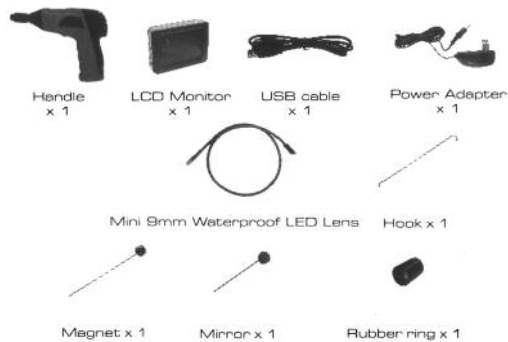
## WELCOME

Congratulations on your purchase of our inspection video camera with recordable colour LCD monitor, the EXPLORER PREMIUM. Please read the user manual carefully before using this product. This product is designed as a remote inspection device, capable of recording video/taking pictures. Appropriate for use in surveying pipes or other hard to reach places, equipment or furnishing installation, car repair, etc. Features include waterproof LED lens, real-time recording and micro SD card storage.

## FEATURES

- Allows for easy surveying of small, hard to reach places.
- Mini 9mm waterproof LED lens, 1.0m flexible tube.
- Manufactured and tested to IP67 waterproof standard.
- 3.5" TFT-LCD detachable/mountable monitor, built-in rechargeable Li-battery.
- Video recording capability, supports up to 32GB micro SD card.
- Adjustable brightness on lens-mounted LED light.
- 3 useful accessories included: hook, mirror and magnet.
- Lightweight, handheld design, flexible and convenient to use.
- Multi language support.

## PACKING LIST



## STRUCTURE



## INSTALLATION

**To Install Batteries** (Dry your hands before installation or replacing batteries.)

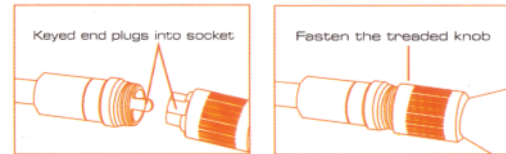
- Using a Philips head screwdriver, remove screw and cover as illustrated below:



- Remove battery compartment and insert four (4) AA batteries into their appropriate slots, with proper orientation, as indicated on the battery compartment.
- Reinstall battery compartment and replace battery cover and screw.

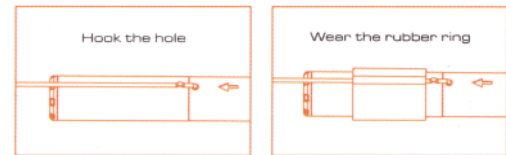
## To Attach Flexible Tube with Handle

To connect the flexible tube camera with control handle, first make sure that the keyed end of the tube is aligned with the slot in the handle, then use slight force to push them together. Once properly aligned, twist the threaded knob clockwise until the connection is securely in place.



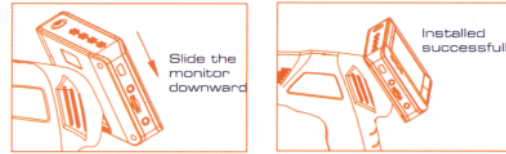
## To Install Accessories

The three (3) included accessories (mirror, hook and magnet) are all attached to the camera in the same way as illustrated below:



## To Install Monitor for Wired Use

EXPLORER PREMIUM supports wired use by connecting the monitor to the camera handle.



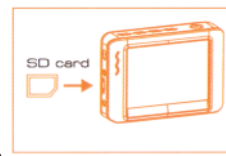
## To Install Extension Tube

To connect the extension tube, first align the keyed end with the slot in the handle. Use slight force to push them together. Once properly aligned, twist the threaded knob clockwise until the connection is securely in place. Repeat this process to connect the other end of the extension tube to the flexible camera tube.



## To Insert SD Card

After SD card is inserted into SD card slot successfully, an SD card icon will appear on the monitor screen; otherwise the 'no SD card' icon will show.



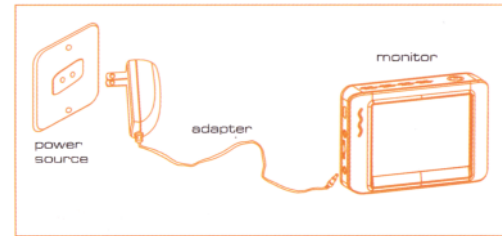
## To Connect USB Cable

Use the provided USB cable to connect the monitor to any PC with a USB slot. Your computer should automatically recognise the new hardware, which you may browse by double-clicking on the My Computer icon on your desktop and then navigating into the Mobile Disk directory.



## To Connect Monitor Power

Connect the monitor to an appropriate (100-240V - 50/60Hz) power source with the provided adaptor. The power indicator LED will illuminate red and the battery capacity icon on the LCD screen will flicker, indicating that the battery is charging. When the red indicator light disappears, the battery has been fully charged.



## Video Output

Insert video cable into the video out socket of the monitor, insert the other end of the cable into the video in jack of any compatible TV or display device. The LCD monitor is now capable of outputting high quality video to another display.

## OPERATION

### Basic Operation

- As you roll the power switch to turn on the camera, the power indicator on the camera handle will light. The rolling switch then acts as a dimmer for the twin LEDs that surround the camera on the end of the flexible tube.
- Press and hold the power switch for 2 seconds on the monitor until the power indicator illuminates green. When the picture from the lens is displayed on the monitor, press the ▲ button on the side of the monitor to toggle between video recording and picture taking functions.



- When in use, the tube should easily manoeuvre itself into position. Do not apply excessive force.

### TIP!

- A: The flexible tube can be bent into numerous shapes that may help you explore areas you otherwise thought were impossible to see.
- B: The accessories included with EXPLORER PREMIUM can be used to retrieve small items like dropped rings or screws.



## Recording Video

- In real-time monitoring mode, press the ▲ button to toggle to video recording mode.
- Press the 'OK' button to begin recording.
- Press again to stop recording.

### Notice!

- The video will be automatically saved as an individual file every 30 minutes.
- In real-time monitoring mode, press the ▼ button to zoom interface.
- The 'F' icon indicates that the SD card memory is full.



## Taking Photos

- In real-time monitoring mode, press the ▲ button to toggle to photo capturing mode.
- Press the 'OK' button to take a photo.

### Notice!

The 'F' icon indicates that the SD card memory is full.

## Playback Video/Picture

- In real-time monitoring mode, press the ≡ button to toggle to the video/picture folder.
- Press the ▲ and ▼ buttons to select your desired folder and then press 'OK' to toggle to the right interface.



### Notice!

The JPG format file is a picture. The MP4 format file is a video.

- For playback video: Press the ▲ or ▼ button to select your desired video and then press 'OK' to playback. Pause: press the 'OK' button once to pause, press again to resume play. Fast Forward: press the ▲ button. Rewind: press the ▼ button. Stop/Exit: press the ≡ button.



Press the ▲ or ▼ button to select your desired picture, press 'OK' button to view and press the ≡ button to exit.

## Deleting Video/Picture

- In real-time monitoring mode, press the ≡ button to toggle to the video/picture folder.
- Press the ▲ or ▼ button to select your desired folder and then press 'OK' button.
- Press the ▲ or ▼ button to select your desired file and then press and hold the ≡ button for 2 seconds or until the right interface appears.
- Press the ▲ or ▼ button to toggle between YES or NO, that is, to delete or cancel. Once you have highlighted your desired selection, press the 'OK' button.



## Deleting Folder

Deleting a folder is done in the same way as deleting a single file, however, make sure that the folder is empty first, otherwise the following error message will appear:



## How to Enter the Setting Mode

In real-time monitoring mode, press and hold the ≡ button for 1-2 seconds or until the right interface appears:



## Language Setting

- In the setting mode, press the ▲ or ▼ button to select 'SYSTEM SETTING' and then press 'OK' button.
- Press the ▲ or ▼ button to select 'Language' and then press 'OK' button, the following interface will appear:
- Press the ▲ or ▼ button to select your desired language.
- Press 'OK' button to confirm and exit.

## Video System Setting

- In the setting mode, press the ▲ or ▼ button to select 'SYSTEM SETTING' and then press 'OK' button.
- Press the ▲ or ▼ button to select 'Video System' and then press the 'OK' button.
- Press the ▲ or ▼ button to toggle between NTSC and PAL. Once your desired system is selected, press 'OK' button to confirm and exit.

## Formatting

- In the setting mode, press the ▲ or ▼ button to select 'SYSTEM SETTING' and then press 'OK' button.
- Press the ▲ or ▼ button to select 'Format' and then press the 'OK' button.
- Press the ▲ or ▼ button to toggle between YES and NO, that is, to format or cancel. Once you have highlighted your desired selection, press the 'OK' button.

## Default Setup

- In the setting mode, press the ▲ or ▼ button to select 'SYSTEM SETTING' and then press 'OK' button.
- Press the ▲ or ▼ button to select 'Default Setup' and then press the 'OK' button.
- Press the ▲ or ▼ button to toggle between YES and NO, that is, to restore default or cancel. Once you have highlighted your desired selection, press the 'OK' button.

## View Version Information

- In the setting mode, press the ▲ or ▼ button to select 'SYSTEM SETTING' and then press 'OK' button.
- Press the ▲ or ▼ button to select 'Version' and then press the 'OK' button. You will now be able to view the version details of your product.

## Date/Time Setting

- In the setting mode, press the ▲ or ▼ button to select 'Date/Time' and then press 'OK', the right interface will appear:
- Press 'OK' button to select Date or Time; Press the ▲ or ▼ button to adjust selection; Press the ≡ button to confirm and exit.



## Frame Rate Setting

- In the setting mode, press the ▲ or ▼ button to select 'RECORDER SETTING' and then press 'OK' button.

...cont.