

#### Battery Low Indication:

Whenever the battery is low, there will appear a battery low indication symbol on the screen (bottom right). This indicates that the battery is low and should be replaced soon. The unit will continue to perform in battery low condition within the specified accuracy and turns off when the battery reaches the limit.



#### Holding/Freezing the Reading:

While measuring, if the reading needs to be frozen for any observation, press the power button during measurement. A text "HOLD" will be displayed on the screen.



#### 9. Battery Replacement

A 550mAh battery will last continuously for more than 20 hours for a Surveymaster in operation. A Battery Low indication on the screen indicates that the battery needs to be changed in a short time.

Remove the screw assembled to fix the battery lid on the back side of the unit.

Slide the battery lid downwards applying a little pressure with the thumb to open the battery compartment.

Remove the battery and replace. Care must be taken to ensure that the polarity is correct. Place the battery in side the compartment.

#### 10. Technical Specifications

##### Operating Conditions:

Operating temperature range: 0°C to 50°C

Humidity: 0 to 90%RH, non-condensing

##### Measurement Specifications:

Moisture measurement:

For integrated and remote pin probes:  
Strong and reliable integrated pins with a cap to protect  
Pin measurement range (%mc in wood/%WME) -  
7.9 to 99% (readings over 30% are relative)

Non-invasive moisture measurement:

Measurement depth - up to 19mm (¾") deep,  
70 to 999, no effect on reading by surface moisture.

#### 11. Physical Specifications

**Power:** 9V Alkaline 550mAh, battery low indication on LCD

**Size:** 19 x 6.5 x 5cm (7.5 x 2.5 x 2")

**Weight (without battery):** 240G

**Max. needle depth:** For WME pins: 10mm (0.4")

**Buzzer:** Audible buzzer for key tone and measurement indication, user configurable

**Regulatory compliance:** CE, RoHS, ETL

# YORK Survey Supply

## Protimeter Surveymaster



**Code: 354690**

## Operating Instructions

**YORK**  
Survey Supply

Prospect House, George Cayley Drive, Clifton Moor, York, England YO30 4XE

Tel: +44 (0) 1904 692723 Fax: +44 (0) 1904 690385  
E-Mail: [sales@yorksurvey.co.uk](mailto:sales@yorksurvey.co.uk) [www.yorksurvey.co.uk](http://www.yorksurvey.co.uk)

**Follow us!**  
York Survey Supply Centre  
[@York\\_Survey](#)  
[@York\\_Survey](#)

## 1. Safety Considerations

**Caution note for the WME pins** - The Pin Moisture measurement pins are extremely sharp and the instrument should be handled with due care. The pins should be covered with the cap provided with the unit when the function is not in use.

**Calibration of unit** - The accuracy specifications of the product are valid for one year after the date of calibration and the product requires recalibration after this period.

Only operate the measuring instrument properly, for it's intended purpose and within the parameters specified in the technical data. Readings from moisture meters are not definitive but are used to help a professional make informed judgement to the material's moisture condition. Conductive material such as salts, carbon and metal can give false positive readings.

## 2. Pin (WME) Mode Operation

In Measure mode, the Surveymaster uses electrical conductance principles to measure the moisture level of the material between two electrodes. The instrument has integral pin electrodes that may be firmly pressed onto surfaces, or it may be used with various auxiliary moisture probes, including Heavy Duty Pin Probe, Deep Wall Probes, a Hammer Electrode (optional) or an EIFS probe (optional).

Remove the needle cap from the top of the Surveymaster and press the power button to switch it on.

Check which operational mode the instrument is in by looking at the letters in digital display %WME indicates the Surveymaster is in Measure mode, (REL)) indicates the meter is in Search mode. If the instrument is in Search mode press ► to switch to Measure mode. %WME will appear in the display. Push the pins firmly onto the surface of the material at the required point of measurement. Read the moisture level value from the display and note the moisture condition of the material from the colour coded LED scale.

*Note: Measurements taken in wood are actual % moisture content values, whereas readings taken in material other than wood are % Wood Moisture Equivalent (%WME) values - see Pin Mode Interpretation for more details.*

## 3. Using Auxiliary Moisture Probes in Pin (%WME) Mode

The Surveymaster is supplied with a Heavy Duty Moisture Probe and lead for taking measurements at points that cannot be reached easily with the integral electrode pins. To use, connect the Moisture Probe jack plug to the socket on the right side of the instrument and push the probe pins onto the surface at the chosen point of measurement.

A pair of Deep Wall Probes can also be used for taking readings at depth in walls and floors. To use, drill two clearance holes of 6mm diameter (¼") roughly 40mm (1½") apart to the required depth. Connect the Deep Wall Probes to the instrument and push the two rods into the clearance holes. Hold them firmly against the base of the holes and take the reading.

The Protimeter Hammer Electrode can also be used to take measurements deep into hard and softwoods.

*Note: Deep Wall Probes may be used to investigate high readings that have been obtained in Search mode. Deep Wall Probes may be used to determine the moisture profile through a structure by increasing the depth of the clearance holes incrementally.*

## 4. Pin (%WME) Mode Interpretation

Measure mode readings are precise and specific to the area of contact between the electrode tips. Actual percent moisture content (%mc) values are measured in wood products. Wood Moisture Equivalent (WME) values are measured in materials other than wood.

The WME measurement is the theoretical %mc value that would be attained by a piece of wood in moisture equilibrium with the material

under investigation at the point of measurement. As the critical %mc levels of wood are known, WME values may be used directly to establish if the material is in a dry, borderline or damp condition as indicated by the colour-coded LED scale.

## 5. Instrument Calibration Check

A calibration check device (Calcheck) is supplied with the instrument for checking the Measure mode calibration. Hold the Calcheck across the electrode pins as shown. A correctly calibrated Surveymaster will read 18.2 ±1.0. Contact York Survey Supply Centre if the instrument is reading incorrectly.

## 6. Search Mode (REL)

When used in Search mode (REL), the Surveymaster is a moisture detector. Search mode readings give, in relative terms, the moisture condition up to ¼" beneath the surface of materials. This mode of operation is ideal for making rapid surveys of solid walls and floors and to pinpoint areas of concern that may justify a more extensive investigation. The Search mode may also be used as an alternative to the Measure mode when it is impractical or undesirable to push electrode pins into surfaces. Consider, for example, taking moisture readings behind ceramic tiles in shower cubicles or in walls covered by quality wallpapers where pin holes would not be acceptable. Surface moisture (such as condensation on an otherwise dry wall) has little effect on Search mode readings. Conductors (other than water) within the material may cause high Search mode readings. Make sure the flat surface on the back of the meter is in full contact with the material to be tested.

It is recommended that users place the meter onto different areas to measure and do not slide the meter across surfaces.

*Note: Sliding the meter can cause premature wear to the back of the meter.*

## 7. Reference Mode

In both Pin and Search modes, GE's patent pending Reference Mode can be used. Measure the material until the meter's reading is stable then press ► for 2 seconds. This will store the reading until the mode changes or the meter turns off. Now all readings taken after will be displayed as normal, but below you will see a second reading that shows you if the material is measured above or below the original reading. Reference mode can be useful when trying to establish what materials are above or below a point of reference or dry standard.

## 8. Operating the Surveymaster

### Switch On:

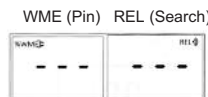
Press the ON/OFF button.

The unit turns on, with the LCD displaying all the segments and sweeping the LED bar graph.



### Mode Change:

Press ► mode button to change to the REL (Search) mode from WME (Pin) and vice versa.



## Measurements:

In both modes, the numeric measurement and colour LEDs will be shown as well as the "DRY" (green) or "AT RISK" (yellow) or "WET" (red), based on the measurement shown.

7-16.9 DRY (Green), 17-19.9 AT RISK (Yellow), 20-99.9 WET (Red)



7-16.9 DRY (Green), 17-19.9 AT RISK (Yellow), 20-99.9 WET (Red)



## Reference Mode of Measurement:

*Note: For application information, see the section "Using the Pin (WME) Mode".*

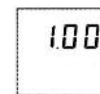
In either mode, take the first measurement which needs to be taken as reference. Whilst the first reading is displayed on the screen, press and hold the ► button for 2 seconds to enter the Reference Mode. The display will be similar to the one shown below.



To return to the normal measurement mode, press ► again.

## Settings:

Press and hold the ► button and switch on the unit by pressing the power button. Hold both the buttons until the Surveymaster displays the version.



Release both buttons whilst it shows the version number. The unit enters Settings mode.

## DRY, AT RISK and WET Settings:

The first screen to appear in Settings is the DRY, AT RISK and WET setting screen.

This screen sets whether the indication on the display needs to be switched ON or OFF. When it is ON, the moisture conditions will be displayed on the screen.



Use the ► button to turn ON/OFF the settings.



If the unit detects no key press for 2 seconds in the Setting screen, it moves to the next setting.

Pressing the power button, after you have entered the desired setting will save the setting and move the screen to the next setting.

## Buzzer ON/OFF Settings:

Once the DRY, AT RISK and WET settings are entered, the next setting turns the Buzzer ON or OFF.



To change the settings, press the ► button.



If the unit detects no key press for 2 seconds in the Setting screen, it moves to the next setting.

Pressing the power button after you have entered the desired setting will save the setting and move the screen to the next setting.

## Backlight Settings:

Once the Buzzer settings are entered, the next setting turns the Backlight ON or OFF.



To change the settings, press the ► button.



If the unit detects no key press for 2 seconds in the Setting screen, it moves to the next setting.

Pressing the power button after you have entered the desired setting will save the setting and move the screen to the next setting.

## Auto Off Time Settings:

When Auto Off is set, the unit will shut down automatically at a specified time between 1 and 6 minutes, if there is no key press detected within the set time.

For example, if the Auto Off time is set as 1, then the unit will automatically shut down after a minute when no key is pressed.



The duration will change based on the set time of 1-6 minutes.

If the Auto Off time is set to "0", then the unit will not automatically turn off. A user must manually turn it off by pressing and holding the power button for 5 seconds.

Turn off time can be set by pressing the ► button, and can be saved by pressing the power button.

After you save this setting, the unit will exit to the measurement screen.

*(continued overleaf)*