

Utili-Finder website at www.utilifinder.com or received from York Survey Supply Centre.

ELECTROMAGNETIC COMPATIBILITY EMC

The term Electromagnetic Compatibility is taken to mean the capability of the product to function smoothly in an environment where electromagnetic radiation and electrostatic discharges are present, and without causing electromagnetic disturbances in other equipment.

⚠ WARNING ELECTROMAGNETIC RADIATION CAN CAUSE DISTURBANCES IN OTHER EQUIPMENT.

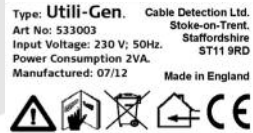
Although the product meets the strict regulations and standards which are in force in this respect, the manufacturer cannot completely exclude the possibility that other equipment may be disturbed.

LABELLING:

UTILI-TRACE



UTILI-GEN



CONFORMITY TO NATIONAL REGULATIONS

Hereby, Cable Detection, declares that the Utili-Trace and Utili-Gen are in compliance with the essential requirements and other relevant provisions of Directive 1999/5/EC. The declaration of conformity may be consulted at www.utilifinder.com.

CE Class 1 equipment according to European Directive 1999/5/EC (R&TTE) can be placed on the market and be put into service without restrictions in any EEA member state.

The conformity for countries with other national regulations not covered by European Directive 1999/5/EC has to be approved prior to use and operation.

TECHNICAL SPECIFICATIONS

Technical Data	Utili-Finder
Utili-Trace Cable Locator	
Proximity alarm	Service less than 30cm deep
Depth range	to 3m
Environmental protection	IP54 shower proof
Batteries	6x AA alkaline (supplied)
Battery life	40 hours intermittent use (at 20°C)
Weight	2.7kg (including batteries)
Utili-Gen Signal Transmitter	
Power supply	UK 13 Amp Plug Mains 230Vrms
Dimensions (mm)	Width: 61 - Height: 47 - Length: 103
Environmental conditions	Indoor use only. Temperature range: 0 - 40°C
Rating input voltage	230V
Power consumption	2VA
Weight	255g



Utili-Finder



Follow us!

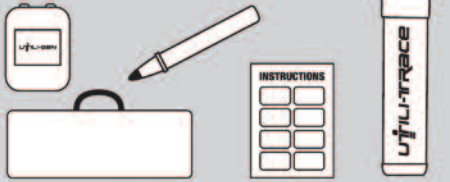
York Survey Supply Centre
@York_Survey
@York_Survey

Prospect House, George Cayley Drive, Clifton Moor, York, England YO30 4XE

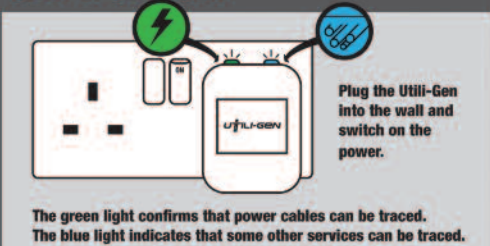
Tel: +44 (0) 1904 692723 Fax: +44 (0) 1904 690385
E-Mail: sales@yorksurvey.co.uk www.yorksurvey.co.uk

Operating Instructions

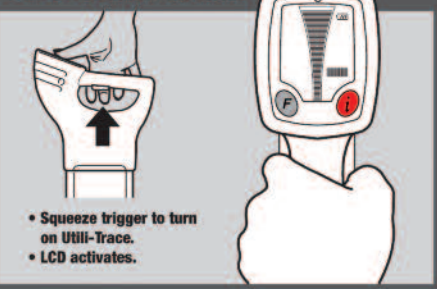
Your Utili-Finder kit will include the following items...



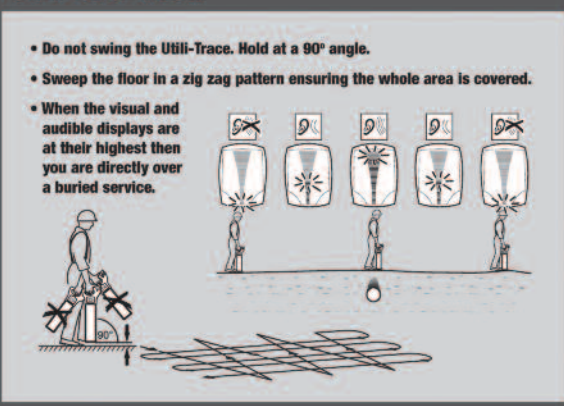
STEP 1: UTILI-GEN



STEP 2: UTILI-TRACE



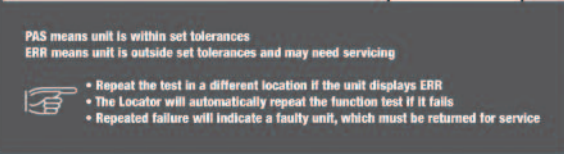
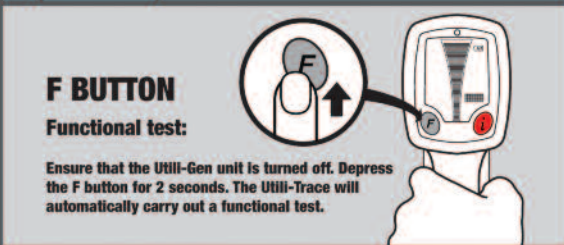
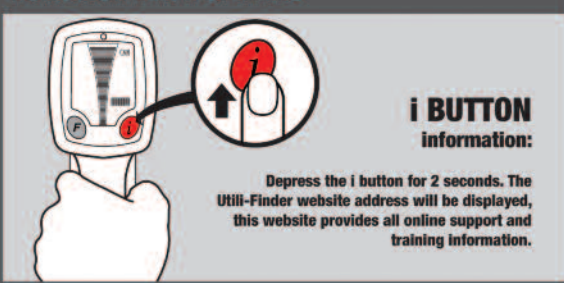
STEP 3: SEARCH



STEP 4: MARK



FUNCTIONALITY OF KEYS



Utili-Finder

USER MANUAL

- ✓ Find Electricity Cables
- ✓ Reduce Cable Strikes

The Utili-Finder may also detect earth bonded utilities, such as...

- ✓ Cable TV
- ✓ Telecom Cables
- ✓ Metal Gas and Water Pipes

GENERAL INFORMATION

The Utili-Finder system operates by creating a detectable signal conducted onto the mains electricity supply and electrically bonded conductive services.

Depending on the material of the utilities present and the electrical safety earth bonding arrangement then when the Utili-Gen blue LED is lit the Utili-Finder may additionally enable metal water and gas pipes, telecom and cable TV cables to be successfully found.

CAUTION

The absence of a positive indication does not guarantee the non-existence of a service.

Services without a detectable signal may also be present. The Utili-Finder will not locate non-metallic services such as plastic pipes, typically used by the water and gas utilities.

PRECAUTIONS: Always excavate with care.

SAFETY DIRECTIONS

The symbols used in this manual have the following meanings:

DANGER Indicates an imminently hazardous situation which, if not avoided, will result in death or serious injury.

WARNING Indicates a potentially hazardous situation or unintended use which, if not avoided, could result in death or serious injury.

CAUTION Indicates a potentially hazardous situation or unintended use which, if not avoided, could result in minor or moderate injury and/or appreciable material, financial and environmental damage.

Important paragraphs which must be adhered to in practice as they enable the product to be used in a technically correct and efficient manner.

The following directions should enable the person responsible for the product, and the person who actually uses the equipment, to anticipate and avoid operational hazards.

PERMITTED USE: The products are intended to be used for the detection and location of underground metallic services: cables and metallic pipes. Utili-Gen is for indoor use only.

REPAIR: The products contain no user servicable parts and do not require regular maintenance. Only Utili-Finder authorised service workshops are entitled to repair these products.

DO NOT:

- Use products with obviously recognisable damage or defects.
- Connect Utili-Gen to an electrical socket with obviously recognisable damage or defects or when wet.
- Open or modify the product using tools, for example a screwdriver.
- Disable electrical equipment safety systems.
- Remove hazard notices.

HAZARDS OF USE

WARNING High mechanical stress, high ambient temperatures or immersion into fluids can cause leakage, fire or explosion of the batteries.

Precautions: Protect the batteries from mechanical influences and high ambient temperatures. Do not drop or immerse the batteries into fluids.

CAUTION During the transport, shipping or disposal of batteries it is possible for inappropriate mechanical influences to constitute a fire hazard.

Precautions: Before shipping the product or disposing of it, discharge the batteries by running the product until they are flat.

When transporting or shipping batteries, the person in charge of the product must ensure that the applicable national and international rules and regulations are observed. Before transportation or shipping contact your local passenger or freight transport company.

DISPOSAL

The product must not be disposed of with household waste. Dispose of the product appropriately in accordance with the national regulations in force in your country. Always prevent access to the product by unauthorised personnel.

WARNING If the product is improperly disposed of, the following can happen:

- If polymer parts are burnt, poisonous gases are produced which may impair health.
- If batteries are damaged or are heated strongly, they can explode and cause poisoning, burning, corrosion or environmental contamination.
- By disposing of the product irresponsibly you may enable unauthorised persons to use it in contravention of the regulations, exposing themselves and third parties to the risk of severe injury and rendering the environment liable to contamination.
- Improper disposal of silicone oil may cause environmental contamination.

Precautions: Product specific treatment and waste management information can be downloaded from the