



Nothing else measures up!

Prospect House
George Cayley Drive
Clifton Moor
York
England
YO30 4XE

Tel: +44 (0) 1904 692723
Fax: +44 (0) 1904 690385

E-Mail: sales@yorksurvey.co.uk

PLS90E & Detector



Code: 775750

Operating Instructions

PLS 90E & Detector

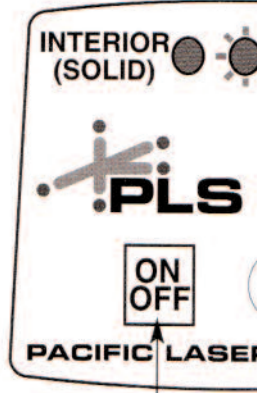
Features

- FINE TUNE ADJUSTMENT
- ON/OFF MENU SWITCH
- BATTERY DOOR
- 1/4 - 20 INSERT IN BASE OF EACH UNIT
- USE 3 AA 1.5V ALKALINE BATTERIES
- OPTIC WINDOWS
- FLOOR TARGET
- UNIVERSAL BASE TRIPOD ADAPTER
- PLS LD LASER DETECTOR OPTIONAL

Menu Switch



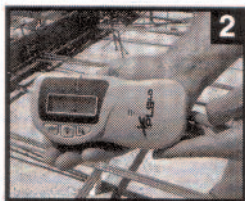
USE FINE TUNE ADJUSTMENT KNOB TO DIAL IN PRECISE LAYOUT.



ON/OFF BUTTON
FIRST PUSH: INTERIOR (SOLID)
SECOND PUSH: EXTERIOR (BLINKING)



When working outside with your PLS-LD or remember to engage the "pulse" with a second press of the "on" button. The wide band width of your PLS-LD or for longer layout tasks. Remember you are capturing a vertical fan angle so your PLS-LD will be used in horizontal position, most often in your close to the ground. When using the PLS90E on a tripod or board, capture the beam close to the 1 to make your reference mark. When using the PLS90E on a tripod or board, the tripod heads are smaller than the unit. When using the PLS90E on a tripod or board, rest it on at least three points of the universal base resting on the tripod head. This will prevent the possibility of the base rocking on the tripod.



Specifications

- | | |
|--------------------|--|
| Light Source: | Semiconductor laser diode
635-670nm, visible |
| Working Range: | ±250 ft (outdoor w/detector) |
| Accuracy - Square: | <1/8" @ 100 ft (outdoor w/detector) |
| Plumb Down: | <1/8" @ 20 ft |
| Levelling: | Automatic |
| Levelling Range: | ±6° |
| Power Supply: | 3AA alkaline batteries |
| Operating Time: | 25+ hours continuous use |
| Operating Temp: | 0°F to 122°F
(-18°C to 50°C) |
| Storage Temp: | -40°F to 158°F
(-40°C to 70°C) |
| Indicator: | Green light: ON
Red Light: EXCEEDS TILT/
Amber Light: BATTERY LOW
Flashing: Pulse Beam - Exterior |
| Environment: | Water resistant; not submersible |
| Dimensions: | 5" x 2 1/4" x 4 1/2" |
| Weight: | 0.77kg (including batteries) |

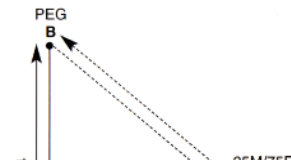
Check Square

CHECKING THE PLS90E ON THE JOB SITE USING PYTHAGORAS 3-4-5 TRIANGLE:
Set up over the center of PEG (A) using the plumb down laser dot.

Using one of the 90 degree beams put PEG in the ground at an exact distance of 15M from PEG (A).

Using the other 90 degree beam, put PEG in the ground at an exact distance of 20M from PEG (A).

Now measure with a tape diagonally from (B) to PEG (C). The distance should be 25M+/75FT.



Universal Base - Tripod Adaptor

The Universal Base-Tripod Adapter is included with the PLS90E. It is made up of three components: 1) batter board trivet brace and 2) tripod adapter.

1. When using your PLS90E on the floor or on a tripod, attach the PLS90E to the universal base by inserting the 1/4-20 bolt into the 1/4-20 insert on bottom of the PLS90E. Note: by removing the batter board trivet brace from the universal base, you can position the PLS90E on the universal base in either direction. This gives you the ability to set the PLS90E down laser point and intersection in either direction. You can set your 90 degree layout for tile or wall.

2. When using the PLS90E on a batter board or tripod, attach the PLS90E to the universal base by sliding the nose of the PLS90E into the threaded clamp. Do this by sliding the notched legs of the universal base onto the batter board or fixed straight-edge. See the threaded clamp brace attached to the base. The beam of the PLS90E should project closely in line with the batter board or fixed straight-edge. The right beam should run parallel to the batter board.

3. When using your PLS90E on a 5/8-11 thread tripod, attach the PLS tripod adapter plate to the PLS90E base. Bolt the tripod threaded rod through the adapter plate. The down beam of the PLS90E will project through the hole of the adapter plate and the universal hole of the tripod adapter plate will align with the universal base.



1) 1/4-20