

YORK Survey Supply



Nothing else measures up!

Follow us!



Prospect House
George Cayley Drive
Clifton Moor
York
England
YO30 4XE

Tel: +44 (0) 1904 692723
Fax: +44 (0) 1904 690385

E-Mail: sales@yorksurvey.co.uk



YORK Survey Supply

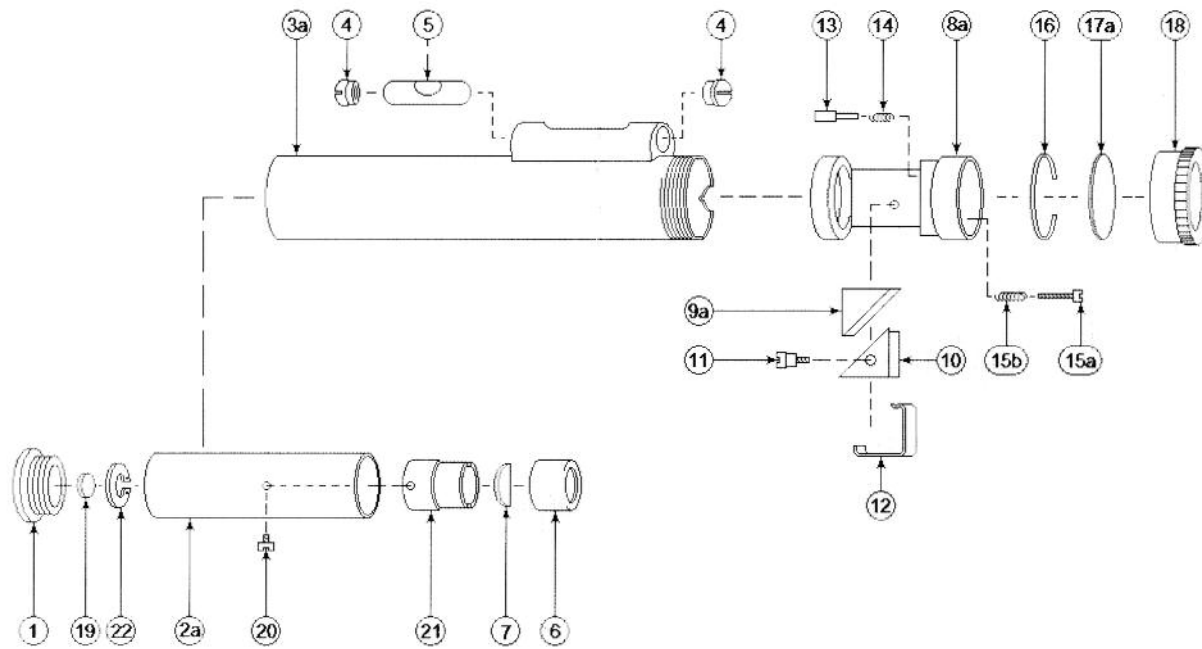
Seco 2x Magnification Hand Level



Code: 80-4300-KR

Operating Instructions

Seco 2x Magnification Hand Level



PART NO.	DESCRIPTION
1	EYEPIECE CAP
2A	DRAW TUBE
3A	MAIN TUBE
4	PLUG SCREW
5	LEVEL VIAL
6	HALF LENS RET CAP
7	HALF LENS
8A	PRISM INSERT
9A	PRISM
10	PRISM BLOCK
11	PRISM BLOCK SCREW
12	PRISM RETAINER
13	PLUNGER PIN
14	PLUNGER SPRING
15A	ADJUSTING SCREW
15B	ADJUSTING SCREW SPRING
16	LENS RETAINER RING
17A	OBJECT LENS
18	OBJECT LENS CAP
19	EYEPIECE LENS
20	SET SCREW
21	HALF LENS HOLDER
22	EYEPIECE LENS RET.
23A	CARRYING CASE

DESCRIPTION

Seco 2x Magnification Hand Level

5 to 7 inch, 2 power, stadia hand level with sharp field of view and stadia ratio of 1:32. Highly visible orange powder coat finish.

OPERATION

Level Measurement

To determine the difference in elevation between where you standing and another point, measure the height from the ground to your eye. Place a level rod, tape measure or similar device at a desired point, holding it in a plumb position. Look through the hand level eyepiece at the level rod, tilting the instrument until the bubble is equally divided by the central line. Subtract that value from the ground to

eye height value to determine the difference in elevation.

Distance Measurement (Stadia Method)

For distance measurement, the draw tube must be fully extended. Look through hand level eyepiece at the level rod, tilting the instrument until the bubble is equally divided by the central line. Read the values indicated on the rod at the upper and lower lines. Subtract the lower value from the higher value and multiply by 32 to obtain distance from your position to the rod.

CLEANING

The object cap assembly and eye cap assembly may be unscrewed and lenses wiped with a non-abrasive cloth or tissue.

ADJUSTMENT

On a level surface set up a stable stand or tripod at eye level 15' to 20' from a vertical surface such as a wall. Place hand level on stand and use a tape to measure from the floor to middle stadia line in field of view. Mark a target at the same height on wall. Tilt hand level slightly up or down until the bubble is not centred within the upper and lower stadia lines, unscrew the objective cap assembly and use a flat head screwdriver to turn the adjusting

screw. Turn adjusting screw clockwise to lower bubble, counterclockwise to raise it. Replace objective cap and check adjustment. Repeat process until bubble is centred and middle stadia line is level with target on wall.

Note: This is a basic adjustment. For a more accurate adjustment, hand levels may be sent to York Survey Supply Centre.