



Nothing else measures up!

Follow us!



Prospect House
George Cayley Drive
Clifton Moor
York
England
YO30 4XE

Tel: +44 (0) 1904 692723
Fax: +44 (0) 1904 690385

E-Mail: sales@yorksurvey.co.uk



Compositite Prism Pole



Operating Instructions

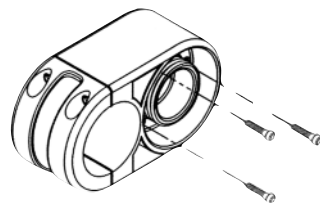
Composilite Prism Pole

CONTENTS:

- 1 Prism Pole
- 1 Point tip assembly
- 1 Topo-Boot
- 1 3/32 Allen wrench
- 1 5/32 Allen wrench

Grip-Tite Adjustment

Normal wear during field use requires that the adjustment of the *Grip-Tite* locking mechanism be checked periodically to ensure ample clamping strength. If adjustment is required, both 3/32 button head cap screws (Allen wrench provided) should be advanced symmetrically.

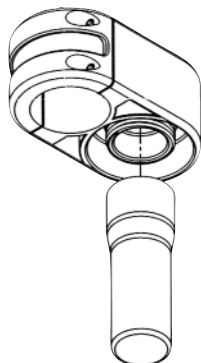


Level Calibration

When the prism pole is plumbed in a vertical position, the level vial may be adjusted accordingly by fine tuning the bubble to the centre of the vial. This fine tuning is accomplished with the 3/32 Allen wrench (provided) by advancing or backing off the socket-head cap screws located beneath the level vial.

Topo-Boot Storage

For convenience the Topo-Boot may be stored underneath the level vial by screwing it into the threads provided as shown.



Point Tip Assembly/Topo-Boot

Base Plug Removal

The prism pole may be disassembled for cleaning or repair by removing the point tip assembly and the expansion plug fitting. This is accomplished by first, (1) unscrewing the point tip assembly; and second, (2) loosening the socket-head cap screw with the 5/32 Allen wrench (provided) in the centre of the expansion plug fitting to allow removal of the fitting as shown.



Prism Pole Scale Adjustment

The Composilite Prism Pole has a standard prism HI offset of 0.427 ft (130.175mm).

The adjustable 5/8 x 11 adaptor may be pre-set within a 0.27ft (82.55mm) range to accommodate a broad range of prism heights.

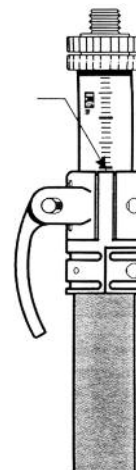
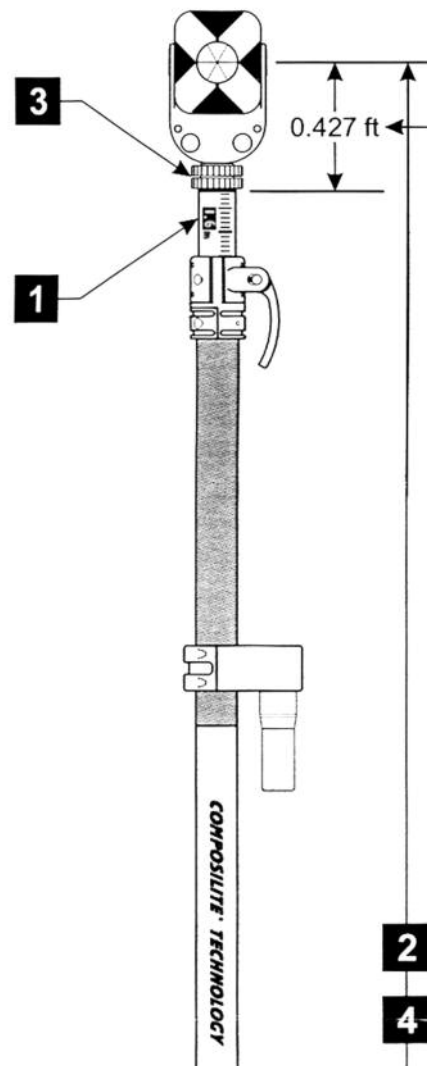
Alternative Scale Adjustment Procedure

- 1) Adjust the prism pole scale to read 1.6m. The 1.6m index mark should be level with the top of the *Grip-Tite* locking mechanism.
- 2) Measure from the bottom of the point tip to the centre point of the prism. This measurement should be approximately 1.6m.
- 3) Adjust the 5/8 x 11 threaded adaptor with the top adjusting nut until the centre of the prism to the bottom of the point tip measures exactly 1.6m; then tighten the bottom jam nut securely.
- 4) Check the overall measurement again to ensure that it reads 1.6m.
- 5) Set the prism pole to actual HI.

**Note: Use of the Topo-Boot adds approximately 0.0065 ft (1.981mm) to the overall height.*

Scale Reading Procedure:

Take measurements from the top edge of the pillar post on the *Grip-Tite* locking mechanism as shown at right.



WARNING



Electrically conductive devices such as antenna cables, cords, wires or metal tapes, regardless of any insulated sheathing, override the nonconductive safety features of this product. Serious or fatal shock may occur if this device is misused.

Users must follow professionally established procedures to ensure safe and accurate results from the use of this product.